

**CABINET
DISPENSERS**

FILL-RITE®
A GORMAN-RUPP COMPANY



DURABLE. DEPENDABLE. CONVENIENT.

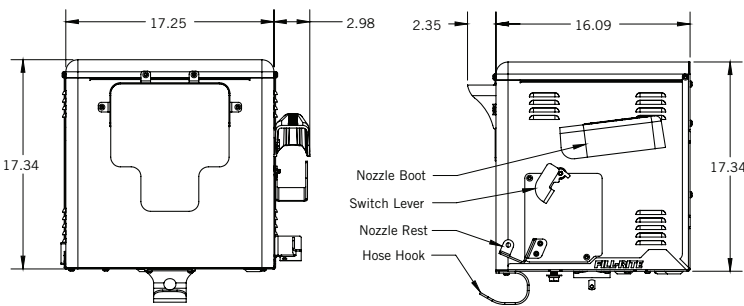
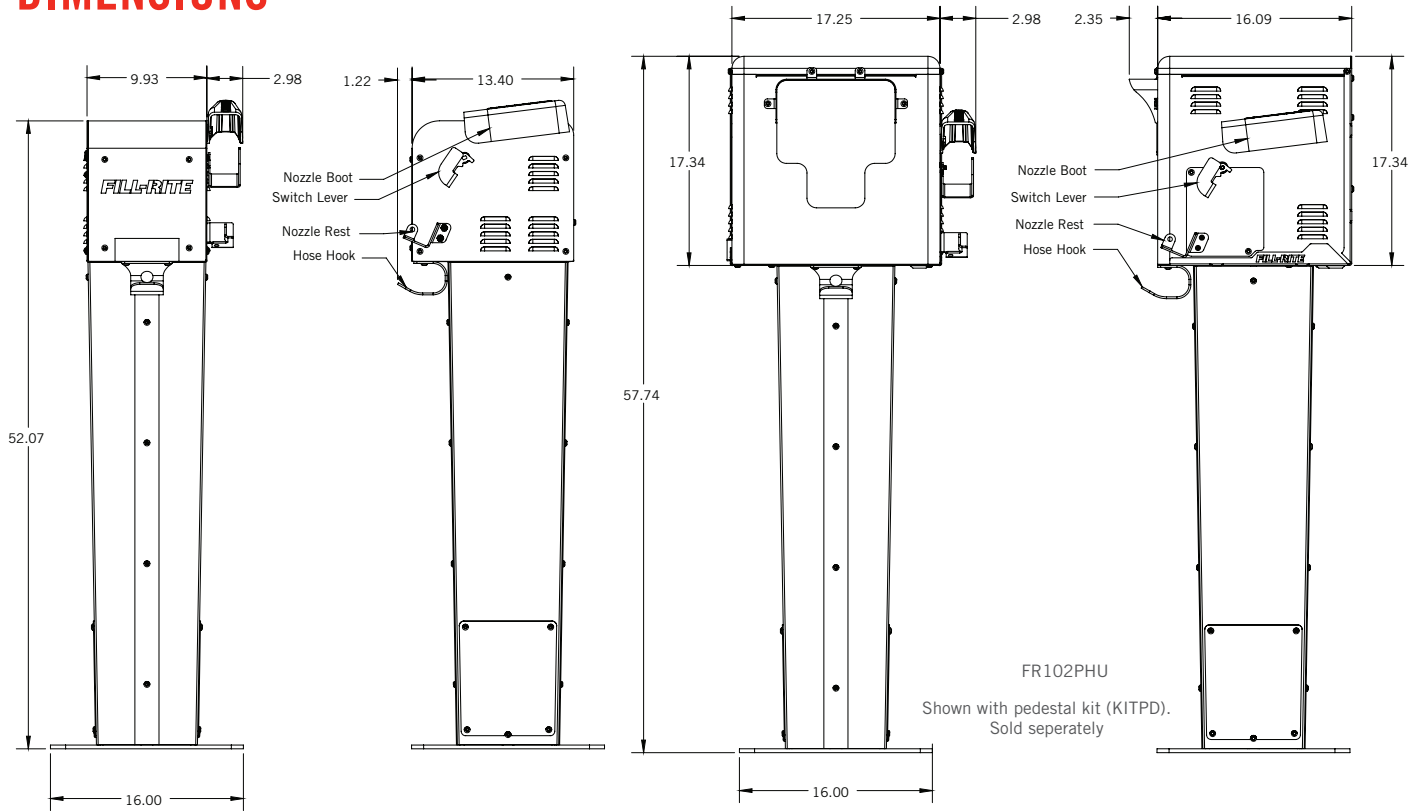
THE FILL-RITE® CABINET DISPENSING FAMILY

Fill-Rite's cabinet meters provide a fuel dispensing solution for virtually every application. The Fill-Rite® legacy of rugged durability and pride in workmanship are clearly evident in this line. The FR102PHU provides clean, simple remote switching for a pump, convenient hose storage, and a heavy duty nozzle boot. The FR902DPU integrate the 900CDP digital meter for applications needing electronic pulse capability. This model is an excellent choice for fuel management systems.

GOR
GORMAN-RUPP
COMPANY

CABINET DISPENSERS

DIMENSIONS



	FR902DPU*	FR102PHU
DESCRIPTION	900CDP Cabinet	Pedestal Nozzle Hook
METER	900CDP	None
PUMP	None	None
ELECTRONICS	4 Digit	None
HAMMER ARRESTOR	Yes	No
SECURITY SOLENOID	Included	Included

*Optional wall mounting bracket (KITMB) or pedestal kit (KITPD) sold separately

FEATURES

- Modular components for installation flexibility
- Easy upgrades from pedestal only to wall or tank mount
- Weights and measures accuracy models available
- Plug and play electronics
- Easy connection to FMS
- Meter models include safety barrier
- Remote metering
- Durable powder coated finish provides added protection from the elements on your meter
- Integrated hammer arrestor
- Large selection of accessories to compliment cabinet



CUSTOMER SUPPORT: (800) 634-2695
TECHNICAL SUPPORT: (260) 747-7524

FILLRITE.COM

